

# URBAN<sup>®</sup>

POLISHING  
MATERIALS

[www.urbanlack.com](http://www.urbanlack.com)

 **URBAN<sup>®</sup>**  
polishing may be easier

## CONTENTS

- ① *Buffing & Polishing Pads*
- ① *Interface Pads*
- ① *Repair Velcro*
- ① *Adaptors*
- ① *Polishing Felts*
- ① *Wool Polishing Pads*
- ① *Polishing Back-Up Pads*
- ① *Sanding Blocks*
- ① *Foam for Recesses*
- ① *Tapes*
- ① *Polishing Paste*
- ① *Microfibre Cloths*
- ① *Logistical Information*

**Legal note:**

The information presented in this catalogue does not constitute an offer within the meaning of the Civil Code. The catalogue is published solely for information purposes. Due to the limitations of printing technology, the colours shown in the catalogue may vary from that of actual product

## WELCOME

Thank you for your interest in our company. We hope that our catalogue provides you with the information you require about our products, and convinces you to start doing business with us.

URBAN has been manufacturing finishing accessories since 1997. Since the outset our goals have been:

- ***consistently high quality***
- ***full customer service***
- ***competitive prices***
- ***honesty, passion and commitment***

We are a leading Polish brand, whose client portfolio includes many long-standing customers. In 2010 we started to expand our business overseas.

All our customers are important to us. Your opinion is what drives us to create products that make work easier and more comfortable, as well as ensuring the desired end result.

The catalogue presents photos and descriptions of our product range. If you have any further questions, please do not hesitate to contact our experienced staff.

*With kind regards,*

*Bogusława Urban*

## HONEY GOLD Buffing Pad



### Available sizes:

150 mm x 50 mm, 150 mm x 25 mm

	thread M14		velcro	
<b>Abrasive</b>	HG 1000	150 x 50 mm	HG 1001	
<b>Very hard</b>	HG 1010*	150 x 50 mm	HG 1011*	
<b>Hard</b>	HG 1020	150 x 50 mm	HG 1021	
<b>Medium</b>	HG 1030	150 x 50 mm	HG 1031	
<b>Med -soft</b>	HG 1050	150 x 50 mm	HG 1051	
<b>Soft</b>	HG 1040	150 x 50 mm	HG 1041	
			velcro	
<b>Abrasive</b>	HG 1100	150 x 25 mm	HG 1101	
<b>Very hard</b>	HG 1110*	150 x 25 mm	HG 1111*	
<b>Hard</b>	HG 1120	150 x 25 mm	HG 1121	
<b>Medium</b>	HG 1130	150 x 25 mm	HG 1131	
<b>Med -soft</b>	HG 1150	150 x 25 mm	HG 1151	
<b>Soft</b>	HG 1140	150 x 25 mm	HG 1141	

**HONEY GOLD** is a new pad for car detailing. Its surface consists of octagonal blocks, the edges of which help to reduce the time taken for the paint to reach ideal conditions, making it easier to control the operating temperature and significantly reducing the risk of overheating. There is increased surface cooling and better heat transfer from the paint. The small, independent working surfaces for the polishing paste minimise traces of spin and facilitate precise handling over the entire paint surface.

The **HONEY GOLD** pad provides an easier, faster and more comfortable way of achieving the perfect gloss finish, even for the most demanding surfaces.

ALWAYS WEAR SAFETY GLASSES!

\* Pad available on request, subject to min. 72 pcs.

### Mount:



thread M14



velcro

### Available hardnesses:



### Applications:



CAR

WOOD

## HONEY HILLS Buffing Pad



### Available sizes:

150 mm x 25 mm

	thread M14		velcro
<b>Abrasive</b>	HH 2100	150 x 25 mm	HH 2101
<b>Very hard</b>	HH 2110	150 x 25 mm	HH 2111
<b>Hard</b>	HH 2120	150 x 25 mm	HH 2121
<b>Medium</b>	HH 2130	150 x 25 mm	HH 2131
<b>Med -soft</b>	HH 2150	150 x 25 mm	HH 2151
<b>Soft</b>	HH 2140	150 x 25 mm	HH 2141

**HONEY HILLS** is an innovatively shaped pad, designed specifically for finishing and car detailing.

The working surface of the **HONEY HILLS** COMBINATION pad is covered with small "hills", which serve to retain and distribute polishing paste evenly over the polished item, and prevent excessive splashing. Paste is applied by filling one or more of the voids between the hills.

The **HONEY HILLS** pad saves time and reduces the consumption of abrasive by holding it within the pad.

ALWAYS WEAR SAFETY GLASSES!

### Mount:



thread M14



velcro

### Available hardnesses:



### Applications:



CAR

## DIAMOND Buffing Pad



### Available sizes:

150 mm x 25 mm

	velcro	
<b>Abrasive</b>	HD 1101*	150 x 25 mm
<b>Very hard</b>	HD 1111*	150 x 25 mm
<b>Hard</b>	HD 1121*	150 x 25 mm
<b>Medium</b>	HD 1131*	150 x 25 mm
<b>Med -soft</b>	HD 1151	150 x 25 mm
<b>Soft</b>	HG 1141*	150 x 25 mm

\* Pad available on request, subject to min. 72 pcs.

### Mount:



velcro

### Available hardnesses:



The **DIAMOND** buffing pad is designed for use with lightly abrasive finishing pastes. It is ideal for fresh, soft coatings, lacquers and paints.

The grooves on the surface of the **DIAMOND** pad improve heat dissipation and increase the effectiveness of polishing due to the large number of independent polishing surfaces.

The pad is designed for use with rotating equipment.

**ALWAYS WEAR SAFETY GLASSES!**

### Applications:



CAR

WOOD

## SPIDER Buffing Pad



**Available size:**

140 mm x 25 mm

velcro

**Very hard** HS 1111 140 x 25 mm

The specially designed surface of the **SPIDER** buffing pad gives it high cutting power, making it ideal for extremely hard coatings, metal and wood. The dual-layer construction increases the shock absorption between the machine and the pad.

A suitable paste, such as URBAN SHINE, will help you get the desired result.

The pad is designed to work with rotating equipment up to 2,600 RPM.

ALWAYS WEAR SAFETY GLASSES!

**Mount:**



velcro

**Available hardnesses:**



**Applications:**



CAR



WOOD



METAL



STONE

**SNAKE Buffing Pad**



**Available size:**

150 mm x 25 mm

velcro

Medium GP 3131 150 x 25 mm

**Mount:**



velcro

The **SNAKE** buffing pad is available in yellow, and is ideal for polishing fresh, soft coatings.

The special foam and unique surface pattern ensure:

- easier working over the entire work surface
- minimisation of the hologram effect and traces of spin
- reduced processing times
- optimal paste usage

**ALWAYS WEAR SAFETY GLASSES!**

**Available hardnesses:**

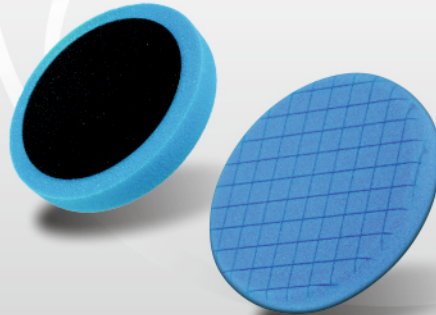


Applications





## SQUARE Buffing Pad



### Available size:

150 mm x 25 mm

velcro

Abrasive **GP 3101** 150 x 25 mm

### Mount:



velcro

The **SQUARE** buffing pad is available in blue, and is ideal for polishing old, hard coatings.

As with the SNAKE buffing pad, the special foam and unique surface pattern ensure:

- easier working over the entire work surface
- faster removal of oxidised paint
- reduced processing times
- increased effectiveness of abrasive pastes

ALWAYS WEAR SAFETY GLASSES!

### Available hardnesses:



### Applications:



CAR



WOOD



YACHT

## EXPERT DA Buffing Pad



### Available size:

140 mm x 25 mm

### velcro

<b>Abrasive</b>	GP 3401	140 x 25 mm
<b>Very hard</b>	GP 3411	140 x 25 mm
<b>Hard</b>	GP 3421	140 x 25 mm
<b>Medium</b>	GP 3431*	140 x 25 mm
<b>Medium-soft</b>	GP 3451	140 x 25 mm

\* Pad available on request, subject to min. 72 pcs.

### Mount:



velcro

### Applications:



The **EXPERT DA** buffing pad is designed for use with dual-action polishing machines. Its size and shape gives a high degree of comfort, and allows smooth operation while maintaining accuracy, on both curved and flat surfaces. The hole in the middle of the pad allows it to be centralised on a mounting plate, as well as providing cooling. Pads are made from high quality foam and durable Velcro. They are designed to work at high speed and are characterised by their extreme durability.

Our range consists of five grades of hardness:

- **blue** (abrasive) - for the coarse polishing and removal of deep-seated damage using highly abrasive pastes
- **white** (very hard) - for the coarse polishing and removal of deep-seated damage using highly abrasive pastes
- **orange** (hard) and yellow (medium) - for the removal of minor paint damage using moderate abrasives or finishing pastes
- **red** (soft) - for surface finishing

ALWAYS WEAR SAFETY GLASSES!

### Available hardnesses:



## MINI EXPERT DA Buffing Pad



### Available size:

90 mm x 25 mm

### velcro

<b>Abrasive</b>	GP 3701	90 x 25 mm
<b>Very hard</b>	GP 3711	90 x 25 mm
<b>Hard</b>	GP 3721	90 x 25 mm
<b>Medium</b>	GP 3731*	90 x 25 mm
<b>Medium soft</b>	GP 3751	90 x 25 mm

\* Pad available on request, subject to min. 50 pcs.

### Mount:



velcro

### Available hardnesses:



### Applications:



The **MINI EXPERT DA** pad is a smaller version of the URBAN PRO EXPERT DA line.

Its size (90x25mm) makes it ideal for hard-to-reach and demanding surfaces, for example around mirrors, along protective strips, around washer-wipers and brand emblems.

Ideal for polishing headlights using a suitable paste such as URBAN SHINE.

**ALWAYS WEAR SAFETY GLASSES!**

## CONE Buffing Pad



### Available sizes:

85 mm x 30 mm  
50 mm x 30 mm

	85 mm	50 mm
<b>Abrasive</b>	GP 36 03	GP 39 03
<b>Very hard</b>	GP 36 13*	GP 39 13*
<b>Hard</b>	GP 36 23	GP 39 23
<b>Medium</b>	GP 36 33*	GP 39 33*
<b>Medium soft</b>	GP 36 53*	GP 39 53*

\* Pad available on request, subject to min. 25 pcs.

### Mount:



A cone-shaped buffing pad for hard-to-reach places.

The pad is made from specially selected high quality foam. Its shape lets you access hard-to-reach places from different angles, giving versatile and universal application.

Suitable for polishing items such as alloy wheels, door recesses, pillars, boot profile recesses, silencers and bumper halogen profiles.

The cone is a durable product, designed for repeated use.

**Fits any rotating equipment with a standard chuck.  
Up to 2,000 RPM.**

**ALWAYS WEAR SAFETY GLASSES!**

### Available hardnesses:



### Applications:



## BALL-SHAPED Buffing Pad



### Available sizes:

75 mm  
100 mm

	pin	
Abrasive	KF 7503	75 mm
Abrasive	KF 1003	100 mm
Medium	KF 7533	75 mm
Medium	KF 1033	100 mm

The ball-shaped buffing pad is a handy polishing tool, ideal for hard-to-reach places. It makes the job easier and quicker, and achieves a better end result.

It is ideal for polishing curved or circular items such as rims, tanks and silencers.

Fits any rotating equipment with a standard chuck.

The ball-shaped pad is a durable product, designed for repeated use.

ALWAYS WEAR SAFETY GLASSES!

### Mount:



pin  $\varnothing$  6

### Available hardnesses:



Applications:



CAR

## CLASSIC Polishing Pad



### Available sizes:

150 mm x 50 mm  
150 mm x 25 mm

	thread M14		velcro
<b>Abrasive</b>	GC 4000	150 x 50 mm	GC 4001
<b>Very hard</b>	GC 4010	150 x 50 mm	GC 4011
<b>Hard</b>	GC 4020	150 x 50 mm	GC 4021
<b>Medium</b>	GC 4030	150 x 50 mm	GC 4031
<b>Med. soft</b>	GC 4050	150 x 50 mm	GC 4051
<b>Soft</b>	GC 4040	150 x 50 mm	GC 4041
<b>Abrasive</b>	GC 4100	150 x 25 mm	GC 4101
<b>Very hard</b>	GC 4110	150 x 25 mm	GC 4111
<b>Hard</b>	GC 4120	150 x 25 mm	GC 4121
<b>Medium</b>	GC 4130	150 x 25 mm	GC 4131
<b>Med. soft</b>	GC 4150	150 x 25 mm	GC 4151
<b>Soft</b>	GC 4140	150 x 25 mm	GC 4141

The **URBAN CLASSIC** professional polishing pad is characterised by its high quality and precision performance. It is made from high-quality materials, making it suitable for repeated use.

It is designed for machine polishing and buffing of automotive paints and coatings of various types, in conjunction with coarse polishing pastes such as **URBAN SHINE**.

It can be used for both wet and dry applications, with a speed range of between 600 and 2,600 RPM.

**ALWAYS WEAR SAFETY GLASSES!**

### Mount:



thread M14



velcro

### Available hardnesses:



### Applications



**MICRO CLASSIC Polishing Pad**



**Available size:**

80mm x 25 mm

Abrasive	metal thread M14	plastic thread M14	velcro
Very hard	GC 4204	GC 4200	GC 4201
Hard	GC 4214	GC 4210	GC 4211
Medium	GC 4224	GC 4220	GC 4221
Med. soft	GC 4234	GC 4230	GC 4231
Soft	GC 4254	GC 4250	GC 4251
	GC 4244	GC 4240	GC 4241

MICRO CLASSIC is a smaller professional polishing pad from the URBAN line.

It is designed for machine polishing and buffing of automotive paints and coatings. The smaller pad gives greater freedom when working on hard-to-reach places such as cavities, recesses, ribbing and concave items.

It can also be used for polishing headlights, using a suitable paste such as URBAN SHINE.

**ALWAYS WEAR SAFETY GLASSES!**

**Mount:**



metal thread M14



plastic thread M14



velcro

**Available hardnesses:**



**Applications:**



CAR



WOOD



METAL



YACHT

**WAFFLE Polishing Pad**



**Available size:**

150 mm x 25 mm

	plastic thread M14		velcro
<b>Abrasive</b>	GK 5100	150 x 25 mm	GK 5101
<b>Very hard</b>	GK 5110	150 x 25 mm	GK 5111
<b>Hard</b>	GK 5120	150 x 25 mm	GK 5121
<b>Medium</b>	GK 5130	150 x 25 mm	GK 5131
<b>Med. soft</b>	GK 5150	150 x 25 mm	GK 5151
<b>Soft</b>	GK 5140	150 x 25 mm	GK 5141

This URBAN line professional polishing pad is characterised by its high quality and precision performance.

The waffle-shaped pad is made from specially selected high quality materials.

Suitable for surface finishing. Ideal for final polishing, using creamy pastes and polishes. The pad structure and its efficient temperature control let you work at higher speeds without burning the paste.

**ALWAYS WEAR SAFETY GLASSES!**

**Mount:**



plastic thread M14



velcro

**Available hardnesses:**



**Applications:**



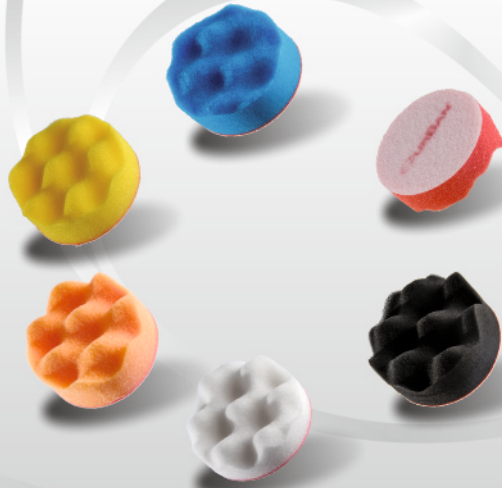
CAR



YACHT



**MICRO WAFFLE Polishing Pad**



**Available size:**

80 mm x 25 mm

	velcro	
<b>Abrasive</b>	GK 5201	80 x 25 mm
<b>Very hard</b>	GK 5211	80 x 25 mm
<b>Hard</b>	GK 5221	80 x 25 mm
<b>Medium</b>	GK 5231	80 x 25 mm
<b>Med. soft</b>	GK 5251	80 x 25 mm
<b>Soft</b>	GK 5241	80 x 25 mm

The **MICRO** pad gives greater freedom when working on hard-to-reach places, ensuring a high quality finish on all painted parts. The pad size allows you to focus on smaller areas such as pillars, recesses and profiles.

ALWAYS WEAR SAFETY GLASSES!

**Mount**



velcro

**Available hardnesses:**



Applications:



CAR

## FLEX Polishing Pad



NO HOLE

HOLE

### Available size:

135 mm x 25 mm

	no hole velcro	hole velcro
<b>Abrasive</b>	GC 4301*	CG 4801*
<b>Very hard</b>	GC 4311*	CG 4811*
<b>Hard</b>	GC 4321*	CG 4821*
<b>Medium</b>	GC 4331*	CG 4831*
<b>Med. soft</b>	GC 4351	CG 4851
<b>Soft</b>	GC 4341*	CG 4841*

A professional polishing pad, measuring 135x25mm, with a characteristic hole in the middle which allows it to be centralised on a mounting plate.

The pad is made from specially selected high quality materials.

It is designed for machine polishing and buffing of automotive paints and coatings of various types, in conjunction with coarse polishing pastes. Suitable for both wet and dry applications.

The speed range for both applications is between 600 and 2,600 RPM.

ALWAYS WEAR SAFETY GLASSES!

\* Pad available on request, subject to min. 72 pcs.

### Mount:



velcro

### Available hardnesses:



### Applications:



ANTI-SPLASH Polishing Pad



Available size:

150 mm x 50 mm

	plastic thread M14	
<b>Abrasive</b>	GF 7000	150 x 50 mm
<b>Very hard</b>	GF 7010	150 x 50 mm
<b>Hard</b>	GF 7020	150 x 50 mm
<b>Medium</b>	GF 7030	150 x 50 mm
<b>Med. soft</b>	GF 7050	150 x 50 mm
<b>Soft</b>	GF 7040	150 x 50 mm

The surface of the pad has three circular grooves, which serve to retain and distribute polishing paste evenly over the polished item, and prevent excessive splashing.

Paste is applied by filling one, two or all three of the grooves. Starting at a slow speed, the paste is distributed evenly over the polished surface. Excess paste is held on the pad surface.

The grooves on the surface of the pad help save time and reduce abrasive consumption by holding it within the pad.

ALWAYS WEAR SAFETY GLASSES!

Mount



plastic thread M14

Available hardnesses:



Applications:



**ROUNDED Polishing Pad**



**Available size:**

150 mm x 50 mm

plastic thread M14

Abrasive	GO 6000	150 x 50 mm
Very hard	GO 6010	150 x 50 mm
Hard	GO 6020	150 x 50 mm
Medium	GO 6030	150 x 50 mm
Med. soft	GO 6050	150 x 50 mm
Soft	GO 6040	150 x 50 mm

This pad is characterised by its rounded upper edge (near the handle).

The pad's curved shape compensates for excessive pressure. As a result the handle will not cut into the pad, avoiding tearing.

**ALWAYS WEAR SAFETY GLASSES!**

**Mount:**



plastic thread M14

**Available hardnesses:**



**Applications:**



**PROFILED Polishing Pad**



**Available size:**

150 mm x 50 mm

**plastic thread M14**

<b>Abrasive</b>	PG 9000	150 x 50 mm
<b>Very hard</b>	PG 9010	150 x 50 mm
<b>Hard</b>	PG 9020	150 x 50 mm
<b>Medium</b>	PG 9030	150 x 50 mm
<b>Med. soft</b>	PG 9050	150 x 50 mm
<b>Soft</b>	PG 9040	150 x 50 mm

This unique polishing pad is characterised by its concave working surface. As the speed increases, the concave shape changes the end result.

At low speed, the pad retains polishing paste, ensuring uniform application over the work surface. At high speed the shape of the pad concentrates the paste in an area where the abrasive particles work quickly and effectively, reducing the overall processing time.

**ALWAYS WEAR SAFETY GLASSES!**

**Mount:**



plastic thread M14

**Available hardnesses:**



**Applications:**



## PLUS Polishing Pad



### Available size:

150 mm x 50 mm

### plastic thread M14

Very hard	GE 8010	150 x 50 mm
Hard	GE 8020	150 x 50 mm
Soft	GE 8040	150 x 50 mm

The **PLUS** line of polishing pads is ideal for anyone who appreciates good quality at an affordable price.

The basic foam component has been selected to provide relatively good quality at a low price.

**ALWAYS WEAR SAFETY GLASSES!**

### Mount:



plastic  
thread M14

### Available hardnesses:



Applications:



**PLUS Polishing Pad****Available size:**

150 mm x 50 mm

**Very hard**

GE 8011 150 x 50 mm

**Hard**

GE 8021 150 x 50 mm

**Soft**

GE 8041 150 x 50 mm

velcro

The **PLUS** line of polishing pads is ideal for anyone who appreciates good quality at an affordable price.

The basic foam component has been selected to provide relatively good quality at a low price.

**ALWAYS WEAR SAFETY GLASSES!**

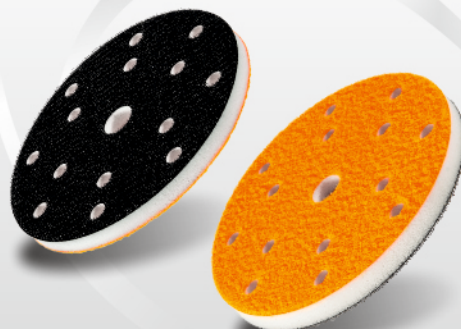
**Mount:**

velcro

**Available hardnesses:**

CAR

## HONEY Interface Pad



### Available size:

150 mm x 10 mm

Elastic

HI 1010

150 x 10 mm

A very high quality interface pad using strong, durable Velcro, open-cell foam and specially selected velour, which allows you to work with a high degree of precision. The structure, hole pattern and specially selected adhesive increase the service life in a dusty environment, as well as increasing the tensile and shear strength by 10%.

The pad is also highly resistant to temperature fluctuations in short term work. The interface pad is a key element in the precision grinding process, using abrasive papers of different coarseness.

**ALWAYS WEAR SAFETY GLASSES!**

### Mount:



velcro



velour

### Available hardnesses:



elastic

### Applications:



CAR



WOOD



METAL



YACHT



STONE



## URBAN 16-hole Interface Pad



### Available sizes:

150 mm x 10 mm  
150 mm x 5 mm

### velcro

<b>Abrasive</b>	PD 1000	150 x 10 mm
<b>Very hard</b>	PD 1010*	150 x 10 mm
<b>Medium</b>	PD 1030	150 x 10 mm
<b>Medium soft</b>	PD 1050	150 x 10 mm
<b>Soft</b>	PD 1040	150 x 10 mm
<b>Soft</b>	PD 0541*	150 x 5 mm
<b>Microrubber hard</b>	PD 0540	150 x 5 mm

\* Pad available on request, subject to min. 40 pcs.

### Mount:



velcro



velour

### Available hardnesses:



The "16 + 1" hole system means that the pad can be used with most common types of equipment. The holes in the paper should be aligned with the holes in the pad.

The interface pad comes in four colours and types: **Hard black interface pads**, made from microrubber, are ideal for initial roughing up and evening out of the surface. 5mm thick. Thinner foam gives greater stiffness during operation, increasing durability.

**Thicker (more flexible) interface pads** are suitable for both initial work, and for finishing gentle curves and profiles. **The blue, yellow, red and black** interface pads are made from top quality materials. The foam was specially selected for its extremely high durability and resistance to dust, larger particles, water and high temperatures.

**Soft black interface pads** are suitable for gentle sanding. They are designed for final processing and finishing. 10mm thick.

**All INTERFACE PADS** are suitable for finishing. At **URBAN** we place particular emphasis on a durable mounting system (using the most durable Velcro on the market), and foam that gives the greatest degree of shock absorption for sanding.

ALWAYS WEAR SAFETY GLASSES!

### Applications:



CAR



WOOD



METAL



YACHT

**Repair VELCRO**



**Available sizes:**

**125 mm 8 holes**  
**150 mm 8, 16 and no holes**

**velcro**

<b>RN 0841</b>	<b>125 mm 8 holes</b>
<b>RN 0851</b>	<b>150 mm 8 holes</b>
<b>RN 1641*</b>	<b>150 mm 16 holes</b>
<b>RN 0041*</b>	<b>150 mm no holes</b>

\* Repair velcro available on request, subject to min. 15 pcs.

Black repair Velcro, with strong adhesive backing.

For the replacement of Velcro on abrasive discs.

Remove the protective film and apply the Velcro gently. Ensure the target surface is grease- and dust-free. Ensure the new Velcro is aligned centrally.

**ALWAYS WEAR SAFETY GLASSES!**

**Mount:**



**velcro**



**adhesive**

## Universal Metal ADAPTOR



### Available sizes:

Ø6 mm  
Ø10 mm

### metal thread M14

TR 0693 Ø6 mm

TR 1093 Ø10 mm

This steel M14 adaptor converts (reduces) the M14 mount to a spindle.

Available in Ø6mm or Ø10mm.

Used to attach pads and discs to a variety of rotating equipment.

ALWAYS WEAR SAFETY GLASSES!

### Mount:



adaptor Ø 6  
adaptor Ø 10



metal  
thread M14

## Polishing **FELTS**



### Available sizes:

75 mm x 6 mm, 125 mm x 6 mm, 150 mm x 6 mm  
 75 mm x 10 mm, 125 mm x 10 mm, 150 mm x 10 mm  
 125 mm x 20 mm

#### metal thread M14

FC 7514 75 x 10 mm  
 FC 1214 125 x 10 mm  
 FC 1224 125 x 20 mm

#### plastic thread M14

FC 1210  
 FC 1220

#### velcro

FC 7561 75 x 6 mm  
 FC 1261 125 x 6 mm  
 FC 1561 150 x 6 mm  
 FC 7511 75 x 10 mm  
 FC 1211 125 x 10 mm  
 FC 1511 150 x 10 mm

Threaded or Velcro-backed polishing felt for use with angle-grinder.

Polishing felts are suitable for polishing glass, headlights, non-ferrous metals and stone (granite, marble, etc.), either dry or wet using polishing paste.

Press the felt polishing pad firmly over the entire Velcro surface. Ensure the pad is aligned centrally on the disc.

For use up to 10,000 RPM.

ALWAYS WEAR SAFETY GLASSES!

### Mount:



metal thread M14



plastic thread M14



velcro

### Applications:



CAR



WOOD



METAL



STONE



GLASS

## WOOL Polishing Pads



### Available sizes:

80 mm, 125 mm, 150 mm, 180 mm, 230 mm

velcro		twine
FP 0801	80 mm	
FP 1251	125 mm	FP 1252
FP 1501	150 mm	FP 1502
FP 1801	180 mm	FP 1802
FP 2301	230 mm	FP 2302

A polishing pad made from dense natural wool, suitable for finishing polished surfaces. Suitable for all types of paint. Available in diameters from 80 to 230mm. This product gives an intense, long-lasting shine.

Wool polishing pads can be used for initial polishing using abrasive polishing pastes.

Pads can be attached to an adaptor plate by string, or to a mounting disc by Velcro.

For use up to 40,000 RPM.

ALWAYS WEAR SAFETY GLASSES!

### Mount:



velcro



twine

### Applications:



CAR



METAL



GLASS

## SOFT Polishing Back-Up Pad white



### Available sizes:

75 mm x 25 mm, 125 mm x 25 mm, 150 mm x 25 mm

#### metal thread M14

Soft	ES 0750	75 x 25 mm
Soft	ES 1250	125 x 25 mm
Soft	ES 1500	150 x 25 mm
Soft	ES 1520	150 x 25 mm hole

### Mount:



metal  
thread M14

#### Applications:



A robust disc designed for use with a buffing pad or sandpaper. Suitable for all types of rotating equipment.

The SOFT Polishing Back-Up pad and a polishing pad are the perfect combination for a range of polished surfaces, reducing the risk of scorching and paint damage. The disc's special design uses a high-quality white foam that allows even pressure from all sides. This lets you regulate the operating temperature of the polishing pad.

The disc is attached to rotating equipment, using an M14 thread.

The central hole allows buffing pads (i.e. Expert DA or Flex) to be mounted concentrically.

The maximum speed is between 3,000 and 6,000 RPM, depending on the diameter.

ALWAYS WEAR SAFETY GLASSES!

### Available hardnesses:



soft

## FLEXIBLE Polishing Back-Up Pad white soft



### Available sizes:

70 mm x 25 mm, 120 mm x 25 mm, 145 mm x 25 mm

### metal thread M14

Soft	EE 7025	70 x 25 mm
Soft	EE 1225	120 x 25 mm
Soft	EE 1425	145 x 25 mm

### Mount:



metal  
thread M14

A robust, flexible disc with specially selected foam, for use with a buffing pad or sandpaper.

The FLEXIBLE Polishing Back-Up pad and a polishing pad are the perfect combination for a range of polished surfaces, reducing the risk of scorching and paint damage. The disc's special design uses a high-quality white foam that allows even pressure from all sides. This lets you regulate the operating temperature of the polishing pad.

The disc is attached to rotating equipment, using an M14 thread.

The maximum speed is between 3,000 and 6,000 RPM, depending on the diameter.

ALWAYS WEAR SAFETY GLASSES!

### Available hardnesses:

soft

### Applications:



## THIN Polishing Back-Up Pad black hard



### Available sizes:

75 mm x 5 mm, 125 mm x 5 mm, 150 mm x 5 mm

### metal thread M14

Hard	EC 0750	75 x 5 mm
Hard	EC 1250	125 x 5 mm
Hard	EC 1500	150 x 5 mm

The THIN Polishing Back-Up pad can be attached to all types of angle-grinder, using an M14 thread.

Depending on the type of sandpaper used, it is suitable for grinding and polishing the flat surface of metal, wood, plastic and building materials.

Press the abrasive disc firmly over the entire Velcro surface. Ensure the abrasive disc is aligned centrally on the disc.

For use up to 10,000 RPM.

ALWAYS WEAR SAFETY GLASSES!

### Mount:



metal  
thread M14

### Available hardnesses:

 **hard**

### Applications:





## MAXI SOFT and MAXI HARD Polishing Back-Up Pads



### Available sizes:

75 mm x 10 mm, 125 mm x 10 mm, 150 mm x 10 mm

#### MAXI SOFT metal thread M14

Soft	<b>MS 0750</b>	75 x 10 mm
Soft	<b>MS 1250</b>	125 x 10 mm
Soft	<b>MS 1500</b>	150 x 10 mm

#### MAXI HARD metal thread M14

Hard	<b>MH 0750</b>	75 x 10 mm
Hard	<b>MH 1250</b>	125 x 10 mm
Hard	<b>MH 1500</b>	150 x 10 mm

The MAXI Polishing Back-Up pads can be attached to all types of angle-grinder, using an M14 thread. It comes in soft and hard versions.

Depending on the type of sandpaper used, it is suitable for grinding and polishing the flat surface of metal, wood, plastic and building materials.

Press the abrasive disc firmly over the entire Velcro surface. Ensure the abrasive disc is aligned centrally on the disc.

For use up to 10,000 RPM.

ALWAYS WEAR SAFETY GLASSES!

### Mount:



metal  
thread M14

### Available hardnesses:

 **hard**       **soft**

### Applications:



CAR



WOOD



METAL



STONE



PLASTIC

## MINI Polishing Back-Up Pad orange hard



### Available sizes:

50 mm x 5 mm, 60 mm x 5 mm, 75 mm x 5 mm

### metal thread M14

Hard	MD 5005	50 x 5 mm
Hard	MD 6005	60 x 5 mm
Hard	MD 7505	75 x 5 mm

This is a specialised piece of equipment for use with all types of rotating equipment. The robust Mini Hard disc is designed to be used with micro versions of polishing pads.

The disc and a polishing pad are the perfect combination for a variety of polished surfaces, letting you work with a greater degree of precision.

The Mini Disc is made from a combination of foam and micro-rubber, ensuring uniform pressure and shock absorption during work.

The disc can be attached to all types of rotating equipment, using an M14 thread.

For use up to 10,000 RPM.

ALWAYS WEAR SAFETY GLASSES!

### Mount:



metal  
thread M14

### Available hardnesses:

 **hard**

### Applications:

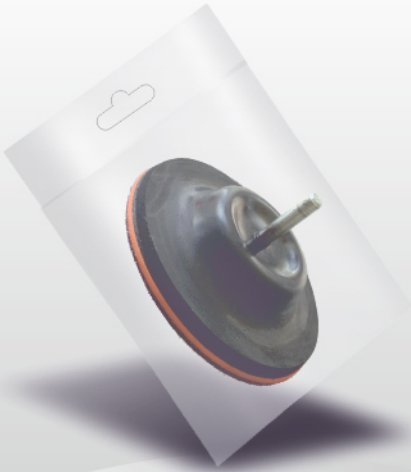


CAR



WOOD

## TILTING Polishing Back-Up Pad



### Available size:

125 mm x 5 mm

Hard pin DU 1253 125 x 5 mm

A disc with a flexible pin, suitable for any type of rotating equipment (except for impact and anti-clockwise rotating).

Depending on the type of sandpaper used, it is suitable for grinding and polishing the flat surface of metal, wood, plastic and building materials.

Attach to rotating equipment by inserting the pin fully into the chuck, and tightening. Press the abrasive disc firmly over the entire Velcro surface.

For use up to 2,500 RPM.

ALWAYS WEAR SAFETY GLASSES!

### Mount:



pin  $\varnothing$  6

### Available hardnesses:

hard

### Applications:



CAR



WOOD



METAL

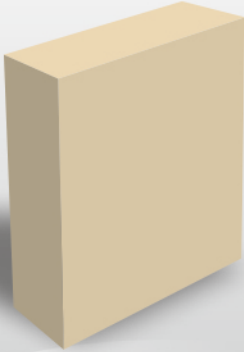


STONE



PLASTIC

**SHIELD for Orbital Sanders with Dust Extraction System**



**Available diameter:**

150 mm

thread M8 5/16

TS 1640 150 mm

Universal SHIELD pad (150mm) for dust-free orbital sanders with 16 dust extraction holes.

Depending on the type of sandpaper used, it is suitable for grinding and polishing the flat surface of metal, wood, plastic and building materials.

Can be attached using an M8 or 5/16 thread.

For use up to 2,500 RPM.

ALWAYS WEAR SAFETY GLASSES!

**Mount:**



thread M8  
5/16

Applications:



CAR



WOOD



METAL



STONE



PLASTIC



## Polishing Back-Up PLATE



### Available diameter:

125 mm x 10 mm

plastic thread M14

OT 1250 125 x 10 mm

### Mount:



plastic  
thread M14

Velcro-backed shock-absorbing plate, Ø125mm.

Suitable for polishing small surfaces that are at risk of suffering from overheating or edge abrasion.

Available with M14 thread mount.

For use up to 2,500 RPM.

ALWAYS WEAR SAFETY GLASSES!

### Applications:



CAR



WOOD

## LUX Profiled Sanding Block hard



### Available sizes:

135 mm x 35 mm  
135 mm x 50 mm

<b>Hard</b>	<b>KH 1351</b>	135 x 50 mm	LUX 1
<b>Hard</b>	<b>KH 1352</b>	135 x 35 mm	LUX 2

**LUX 1** single-edge profile

**LUX 2** semicircular

A lightweight, profiled sanding block, made from rigid, waterproof foam, which prevents deformation of the work surface. A choice of two profiles lets you adapt to the work surface and work effectively at all times.

Suitable for dry or wet manual sanding using sandpaper, microfibre or emery cloth.

**ALWAYS WEAR SAFETY GLASSES!**

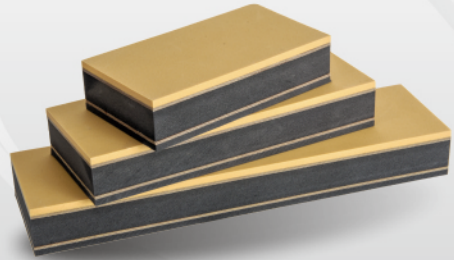
### Available hardnesses:

 **hard**

### Applications:



## CARBON Five-Layer Sanding Block hard



### Available sizes:

140 mm x 75 mm  
200 mm x 75 mm  
280 mm x 75 mm

Hard	KH 1400	140 x 75 mm
Hard	KH 2000	200 x 75 mm
Hard	KH 2800	280 x 75 mm

A hard, five-layer sanding block for sanding a range of surfaces, with different end results.

This lightweight block is made from three different hardnesses of waterproof foam and two special 2mm thick inserts, which stiffen the block and prevent deformation of the work surface. The outer layers use shock-absorbing foam, which adapt to the work surface. The construction of the block lets you work effectively at all times.

Suitable for dry or wet manual sanding using sandpaper, microfibre or emery cloth.

ALWAYS WEAR SAFETY GLASSES!

### Available hardnesses:

 **hard**

### Applications:



CAR



WOOD



METAL



YACHT



STONE

## DAB Profiled Sanding Block black/soft



### Available sizes:

135 mm x 35 mm  
135 mm x 50 mm

Soft	KC 1351	135 x 50 mm	DAB 1
Soft	KC 1352	135 x 35 mm	DAB 2

**DAB 1** *single-edge profile*

**DAB 2** *semicircular*

A lightweight, profiled sanding block, made from soft, waterproof foam. A choice of two profiles lets you adapt to the work surface, ensuring that you work effectively at all times.

Suitable for dry or wet manual sanding using sandpaper, microfibre or emery cloth.

ALWAYS WEAR SAFETY GLASSES!

### Available hardnesses:

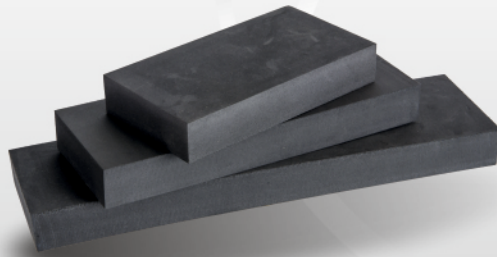
 **soft**

### Applications:





## MAX Single-Layer Sanding Block black/soft



### Available sizes:

140 mm x 75 mm  
200 mm x 75 mm  
280 mm x 75 mm

Soft	<b>KS 1401</b>	140 x 75 mm
Soft	<b>KS 2001</b>	200 x 75 mm
Soft	<b>KS 2801</b>	280 x 75 mm

A lightweight sanding block made from soft, waterproof foam.

The flat sides of this block are ideal for gentle sanding of curved or flat surfaces.

Suitable for dry or wet manual sanding using sandpaper, microfibre or emery cloth.

**ALWAYS WEAR SAFETY GLASSES!**

### Available hardnesses:

 **soft**

### Applications:



CAR



WOOD



METAL



YACHT



STONE

## RUB Profiled Sanding Block green/medium-soft



**RUB 2**

**RUB 1**

### Available sizes:

135 mm x 35 mm  
135 mm x 50 mm

Medium soft	<b>KZ 1351</b>	135 x 50 mm	RUB 1
Medium soft	<b>KZ 1352</b>	135 x 35 mm	RUB 2

**RUB 1** *single-edge profile*

**RUB 2** *semicircular*

A lightweight, profiled sanding block, made from medium-soft, waterproof foam. A choice of two profiles lets you adapt to the work surface, ensuring that you work effectively at all times.

Suitable for dry or wet manual sanding using sandpaper, microfibre or emery cloth.

**ALWAYS WEAR SAFETY GLASSES!**

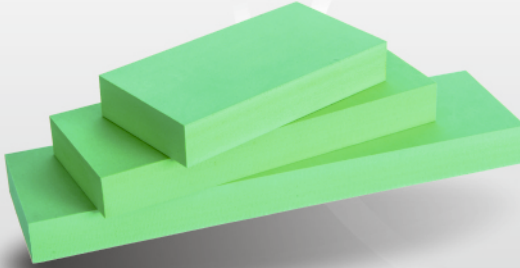
### Available hardnesses:

 **medium soft**

### Applications:



## BOX Single-Layer Sanding Block green/medium-soft



### Available sizes:

140 mm x 75 mm  
200 mm x 75 mm  
280 mm x 75 mm

Medium soft	KS 1402	140 x 75 mm
Medium soft	KS 2002	200 x 75 mm
Medium soft	KS 2802	280 x 75 mm

A lightweight, profiled sanding block, made from medium-soft, waterproof foam.

Flatblock is used for gentle dulling oval and flat surfaces.

Suitable for dry or wet manual sanding using sandpaper, microfibre or emery cloth.

ALWAYS WEAR SAFETY GLASSES!

### Available hardnesses:

 **medium soft**

### Applications:



CAR



WOOD



METAL

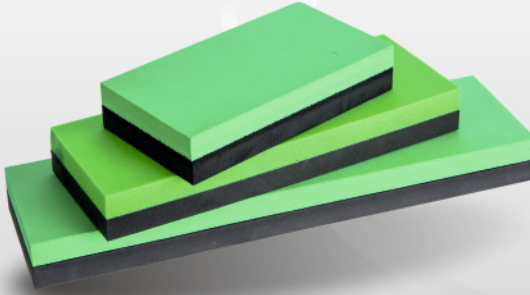


YACHT



STONE

**DUO Sanding block black/soft and green/medium soft**



**Available sizes:**

140 mm x 75 mm  
 200 mm x 75 mm  
 280 mm x 75 mm

Soft/Medium soft	KS 1403	140 x 75 mm
Soft/Medium soft	KS 2003	200 x 75 mm
Soft/Medium soft	KS 2803	280 x 75 mm

A lightweight, flat-sided sanding block, made from two soft, waterproof foams of different density. Under gentle pressure, both surfaces accurately follow the shape of the workpiece, giving smooth operation in all directions.

Suitable for dry or wet manual sanding using sandpaper, microfibre or emery cloth.

**ALWAYS WEAR SAFETY GLASSES!**

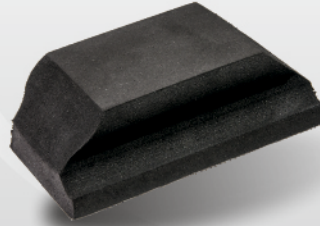
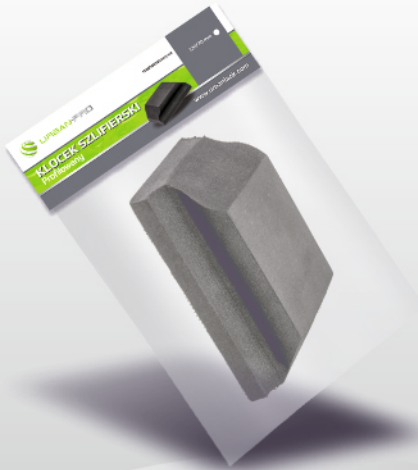
**Available hardnesses:**

 **medium-soft**

**Applications:**



## ERGO PRO Profiled Sanding Block black/soft



### Available size:

120 mm x 70 mm

A lightweight sanding block and Velcro attachment, made from foamed-rubber, a material characterised by its strength and durability.

Suitable for dry or wet manual sanding using sand-paper, microfibre or emery cloth.

ALWAYS WEAR SAFETY GLASSES!

Soft

KS 1200


120 x 70 mm



velcro

### Mount:

### Available hardnesses:

 soft

Applications:



CAR



WOOD



YACHT

## CRESCENT Semicircular Sanding Block hard and soft



### Available size:

150 mm

Hard	KS 1500	150 mm
Soft	KS 1501	150 mm

A semicircular sanding block for hard-to-reach, tight spots on a range of flat and profiled surfaces. This product enables a high degree of precision when sanding parts, helping to restore the original effect.

It is widely used in the automotive, painting, construction and carpentry sectors.

ALWAYS WEAR SAFETY GLASSES!

### Mount:



velcro

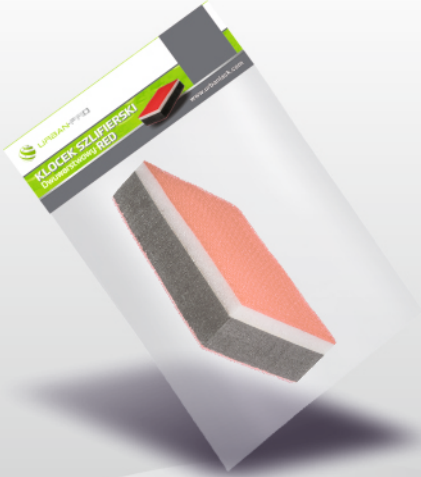
### Available hardnesses:

● *hard*    ● *soft*

### Applications:



## RED Dual-Layer Sanding Block hard and soft



### Available size:

120 mm x 70 mm

Soft-hard

KU 1200

120 x 70 mm

A lightweight, rigid sanding block, made from four components.

There are two operating surfaces: black and white.

- The **black side** is used for rapid sanding of flat surfaces. It is hard and rigid.
- The **white side** is made from soft, flexible foam. It is used for sanding gentle curves, recesses and all manner of irregular profiles.

A 2-in-1 product.

ALWAYS WEAR SAFETY GLASSES!

### Mount:



velcro

### Available hardnesses:

 **soft-hard**

### Applications:



CAR



WOOD



YACHT

## SOFT EDGE FOAM Masking Tape



### Available sizes:

5 mm x 20 m  
13 mm x 20 m  
13 mm x 50 m

PP 2005	5 mm x 20 m
PP 2013	13 mm x 20 m
PP 5013	13 mm x 50 m

**NOTE!**  
Peel at an angle of 90°

A polyurethane foam for filling gaps between the doors, bonnet or boot lid, and the vehicle body.

The product consists of highly flexible polyurethane foam and a layer of adhesive. The foam adheres perfectly to uneven surfaces, filling the empty space.

It can also be used to mask car parts for painting, avoiding the need for rework due to unwanted paint "cut off".

Characteristics:

- highly flexible
- dampens vibrations and noise
- impact resistant
- good insulation properties
- temperature-resistant
- easy application

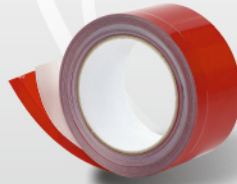
It is widely used for protecting elements during transportation.

Applications:





**MASKING-LIFTING Tape**



Available  
WITH PERFORATIONS

**Available sizes:**

- 10 mm x 50 mm x 10 m
- 15 mm x 50 mm x 10 m
- 19 mm x 50 mm x 10 m

- TO 1050 10 mm x 50 mm x 10 m
- TO 1550 15 mm x 50 mm x 10 m
- TO 1950 19 mm x 50 mm x 10 m

**Perforated**

- TP 1050 10 mm x 50 mm x 10 m
- TP 1550 15 mm x 50 mm x 10 m
- TP 1950 19 mm x 50 mm x 10 m

A special plastic strip facilitates insertion of the tape under the seal. The rest of the tape protects the rubber seal and glass during painting.

Once the protective film has been inserted under the seal, the edge of the seal can be lifted away from the bodywork, facilitating access to the gap between the seal and the bodywork.

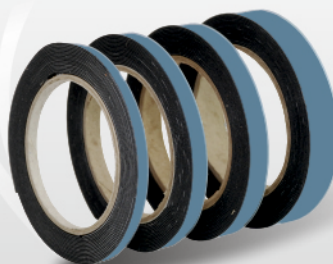
Tapes are also available with perforations every 50mm, a great help when it comes to detaching and applying the tape in places where the seals are curved (e.g. windscreens, headlights, etc.).

URBAN masking-deflecting tape is designed to mask seals around fixed glass panels.

**Applications:**



## HONEY Double-Sided Adhesive Tape blue



### Available sizes:

6, 9, 12, 19, 25 mm x 10 m

TH 1006	6 mm x 10 m
TH 1009	9 mm x 10 m
TH 1012	12 mm x 10 m
TH 1015*	15 mm x 10 m
TH 1019**	19 mm x 10 m
TH 1025***	25 mm x 10 m

\* Tape available on request, subject to min. 200pcs.

\*\* Tape available on request, subject to min. 160 pcs.

\*\*\* Tape available on request, subject to min. 120 pcs.

HONEY double-sided tape has a suitably selected density of foam, giving increased flexibility and greater tensile and shear strength. The greater nanosowi polymer-based adhesive increases the strength by 7% compared to other tapes. A suitable combination of foam and adhesive gives greater resistance to moisture and weather conditions. Suitable for joining elements such as glass, metal, plastics, composites and wood.

### Characteristics:

Operating temperature range: -30°C to 115°C

### Resistance:

to water: **very high**

to UV: **very high**

to engine oil: **very high**

to fuels: **very high**

to temperature variations: **very high**

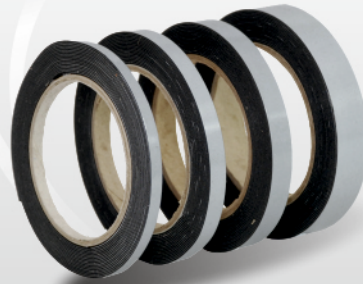
### Method of attachment:

The surface should be clean, free from dust and grease, and pre-heated to at least 45°C. Apply the tape firmly to the first surface, remove the protective film and offer up to the second surface. Finally, press the bonded elements firmly together.

### Applications:



## URBAN Double-Sided Adhesive Tape grey



### Available sizes:

6,9,12,15,19,25 mm x 5 m  
6,9,12,15,19,25 mm x 10 m

TD 0506	6 mm x 5 m
TD 0509	9 mm x 5 m
TD 0512	12 mm x 5 m
TD 0515	15 mm x 5 m
TD 0519	19 mm x 5 m
TD 0525	25 mm x 5 m
TD 0550*	50 mm x 5 m

TD 1006	6 mm x 10 m
TD 1009	9 mm x 10 m
TD 1012	12 mm x 10 m
TD 1015	15 mm x 10 m
TD 1019	19 mm x 10 m
TD 1025	25 mm x 10 m

A tape for fixing trim, decorative profiles, etc. Resistant to salt, water, UV radiation and high temperatures. It has a high shear strength. The tape is made from reinforced PE foam and AM adhesive, which gives it excellent performance in extreme conditions. Adhesive layer protection: TR silicone film.

### Characteristics:

Operating temperature range: -40°C to 110°C

### Resistance:

to water: **very high**  
to UV: **very high**  
to engine oil: **very high**  
to fuels: **very high**

\* Tape available on request, subject to min. 50pcs.

### Applications:



CAR



WOOD



METAL



YACHT



PLASTIC

## PLUS Double-Sided Adhesive Tape green



### Available sizes:

6,9,12,15,19,25 mm x 5 m  
6,9,12,15,19,25 mm x 10 m

TE 0506	6 mm x 5 m
TE 0509	9 mm x 5 m
TE 0512	12 mm x 5 m
TE 0515	15 mm x 5 m
TE 0519	19 mm x 5 m
TE 0525	25 mm x 5 m

TE 1006	6 mm x 10 m
TE 1009	9 mm x 10 m
TE 1012	12 mm x 10 m
TE 1015	15 mm x 10 m
TE 1019	19 mm x 10 m
TE 1025	25 mm x 10 m

A tape for fixing trim, decorative profiles, etc. Resistant to salt, water, UV radiation and high temperatures. It has a high shear strength. Adhesive layer protection: TR silicone film.

### Characteristics:

Operating temperature range: -20°C to 80°C

### Resistance:

to water: **high**

to UV: **high**

to fuels: **high**

Applications:



CAR



PLASTIC

## URBAN SHINE Polishing Paste



### Available container sizes:

0.25 l  
1 l

HP 0250	0.25 l
HP 1000	1 l

A polishing paste designed for use with all fresh coatings (paints and clear coats, scratch-resistant, UHS, HS, MS 2K and 1K) and for refreshing old coatings (on metal and wood).

URBAN SHINE paste works best with the HONEY GOLD and HONEY HILLS buffing pads. URBAN SHINE uses innovative URBANexus One Step technology. Polishing a surface that has been prepared using P2000-2500 sandpaper gives an immediate high gloss effect, with no hologram effect. One paste, one pad - even on black surfaces.

The paste can be used for manual or machine polishing.

To reduce the polishing time and remove minor scratches, use equipment operating between 1,500 and 2,500 RPM.

URBAN SHINE paste CONTAINS NO wax or silicone.

### Applications:



CAR



WOOD



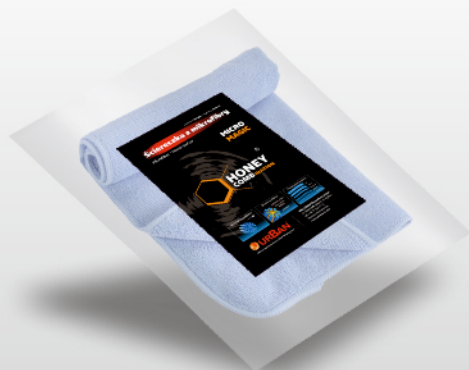
METAL



YACHT



STONE

**MAGIC Microfiber Cloth****Available size:**

400 mm x 400 mm

**HM 4040** 400 x 400 mm

A high-quality microfiber cloth made of a soft and delicate structure. The nature of the cloth means that it will not scratch the surface, even with increased pressure.

**Applications:**

- wiping using wax, polishing paste or glaze
- polishing surfaces after waxing
- general cleaning of paint and plastic
- removal of residues after using a polishing stone

The cloth is reusable.



CAR



WOOD



METAL



YACHT



STONE



GLASS



PLASTIC

**Applications:**



**BLUE Buffing & Polishing Pads**

Abrasive pads, suitable for preliminary buffing.



**WHITE Buffing & Polishing Pads**

Very hard pads, suitable for mechanical polishing and sanding.



**ORANGE Buffing & Polishing Pads**

Hard, less dense pads, suitable for polishing all types of coating.



**YELLOW Buffing & Polishing Pads**

Medium hardness pads, suitable for use with medium or fine abrasive pastes for the removal of minor damage paint.



**RED Buffing & Polishing Pads**

Medium-soft pads, suitable for finishing surfaces.



**BLACK Buffing & Polishing Pads**

Soft pads that eliminate traces of spin.  
Suitable for machine use in conjunction with finishing pastes and polishes.



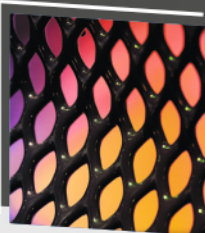
**Top-quality foam**

Our high-quality foam is extremely durable and gives excellent polishing results. The pad structure retains water, at the same time as dissipating heat from the polished surface.



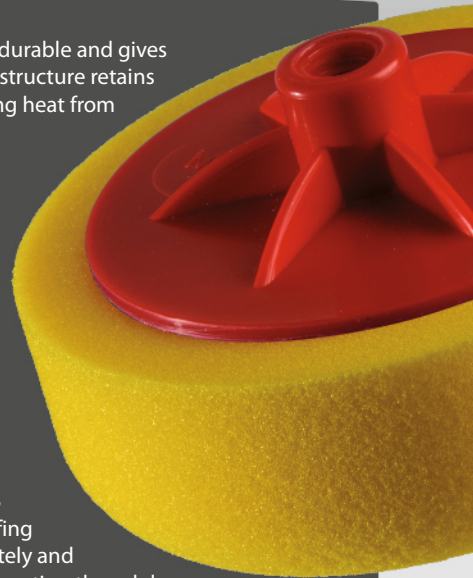
**Easy mounting**

Buffing & Polishing pads can be attached and detached easily using the threaded mount.



**ABS mount**

The mount is made from tough ABS plastic. The mount ensures that Buffing & Polishing pads are aligned accurately and securely in rotating equipment, preventing thread damage.







## Rally group

We all know that even the most rewarding job is not everything!

That is why we have decided to support the rallies that are without any doubt one of the most spectacular motorsport disciplines, and the automotive industry is very close to our profession.

We are an official sponsor of Grzegorz Grzyb - silver medalist of Poland Championships (2012), second silver medalist of Poland Championships (2015), silver medalist of Central Europe (2012), 3 times Champion of Slovakia Championships (2012, 2013, 2014), who drives a Skoda Fabia Super 2000 car.

See you on the road!



I recommend,  
Grzegorz Grzyb



## PARTNERSHIP

### Partnership involves:

A **distribution system** based on selling through warehouses, retailers and paint mixing shops only, putting you in contact with existing distributors.

Potential customers who call URBAN directly from your area will be **redirected to your own paint mixing shop/warehouse**.

**Favourable pricing policy** for helping to promote the URBAN brand.

**Advertising materials** (stickers, T-shirts, calendars, notebooks, etc.) for you and your customers.

**Point-of-sale equipment:** shelves, racks, sweatshirts with our and your logo, product brochures, advertising banners, etc.

**Our assurance** that sales representatives will not visit car repair shops or paint workshops directly, offering the sale of URBAN products.

A **personal sales representative**.



If you are interested in working in partnership, please feel free to contact us. We are confident that together we will find a solution that meets your expectations and forms the basis of a long-term partnership.

## PACKAGING - Number of Pieces in Bulk Containers

Product name		Quantity [pcs]	Size [cm]	Gross weight [kg]
Buffing & Polishing pads 150x50 mm	Pallet's box	70	80x60x37	9,00
Buffing & Polishing pads 150x50 mm		72	70x50x50	9,30
Buffing & Polishing pads 150x25 mm	Pallet's box	200	80x60x37	12,00
Buffing & Polishing pads 150x25 mm		216	70x50x50	13,00
Masking-Lifting tape		129	60x40x40	24,00
Double-Sided Adhesive Tape 6mmx5m		720	60x40x40	13,20
Double-Sided Adhesive Tape 9mmx5m		480	60x40x40	12,00
Double-Sided Adhesive Tape 12mmx5m		360	60x40x40	10,50
Double-Sided Adhesive Tape 15mmx5m		300	60x40x40	11,60
Double-Sided Adhesive Tape 19mmx5m		240	60x40x40	11,50
Double-Sided Adhesive Tape 25mmx5m		180	60x40x40	10,30
Double-Sided Adhesive Tape 6mmx10m		500	60x40x40	14,60
Double-Sided Adhesive Tape 9mmx10m		320	60x40x40	12,60
Double-Sided Adhesive Tape 12mmx10m		240	60x40x40	13,40
Double-Sided Adhesive Tape 15mmx10m		200	60x40x40	13,00
Double-Sided Adhesive Tape 19mmx10m		160	60x40x40	11,80
Double-Sided Adhesive Tape 25mmx10m		120	60x40x40	13,50
Polyurethane foam 20mbx13mm		40	80x60x37	6,90
Soft Edge Foam Masking Tape 20mx13mm		44	70x50x50	7,50
Soft Edge Foam Masking Tape 50mx13mm		16	70x65x65	10,50
Soft Edge Foam Masking Tape 50mx13mm	Pallet	102	120x80x15	85,00
Urban Shine Polishing Paste 250g		24	23x17x33	7,00
Urban Shine Polishing Paste 1000g		12	26x26x35	13,00
Interface Pads		40	31x26x15	1,80
Polishing Back-Up Pads Ø75 mm		36	31x26x15	3,50
Polishing Back-Up Pads Ø125 mm		30	31x26x15	4,50
Polishing Back-Up Pads Ø150 mm		10	31x26x15	2,50
Polishing Felts	according to the diameter, max	80	31x26x15	9,00
Wool Polishing Pads	according to the diameter, max	40	31x26x15	1,50
Sanding Blocks 135x35 mm		288	60x40x40	14,00
Sanding Blocks 135x50 mm		312	60x40x40	16,00
Sanding Blocks 140x75 mm hard		240	60x40x40	20,00
Sanding Blocks 200x75 mm hard		168	60x40x40	23,00
Sanding Blocks 280x75 mm hard		120	60x40x40	18,00
Sanding Blocks 140x75 mm soft		320	60x40x40	8,00
Sanding Blocks 200x75 mm soft		244	60x40x40	7,00
Sanding Blocks 280x75 mm soft		160	60x40x40	6,00
Sanding Block 150 mm		80	31x26x15	2,70

Weights are approximate.

[www.gabki-polerskie.pl](http://www.gabki-polerskie.pl)  
[www.klockipolerskie.pl](http://www.klockipolerskie.pl)

www.urbanlack.com

**P.H.U. "URBAN" Bogusława Urban**

ul. Żytnia 1, 55-300 Środa Śląska  
phone. +48 71 314 47 71  
e-mail: [biuro@urbanlack.com](mailto:biuro@urbanlack.com)

**Sales Department:**

**EXPORT**

mob. +48 508-573-466  
e-mail: [export@urbanlack.com](mailto:export@urbanlack.com)

**POLAND**

mob. +48 509-213-665  
e-mail: [biuro@urbanlack.com](mailto:biuro@urbanlack.com)

Dealer:



 **URBAN**<sup>®</sup> is an owner of brands:

